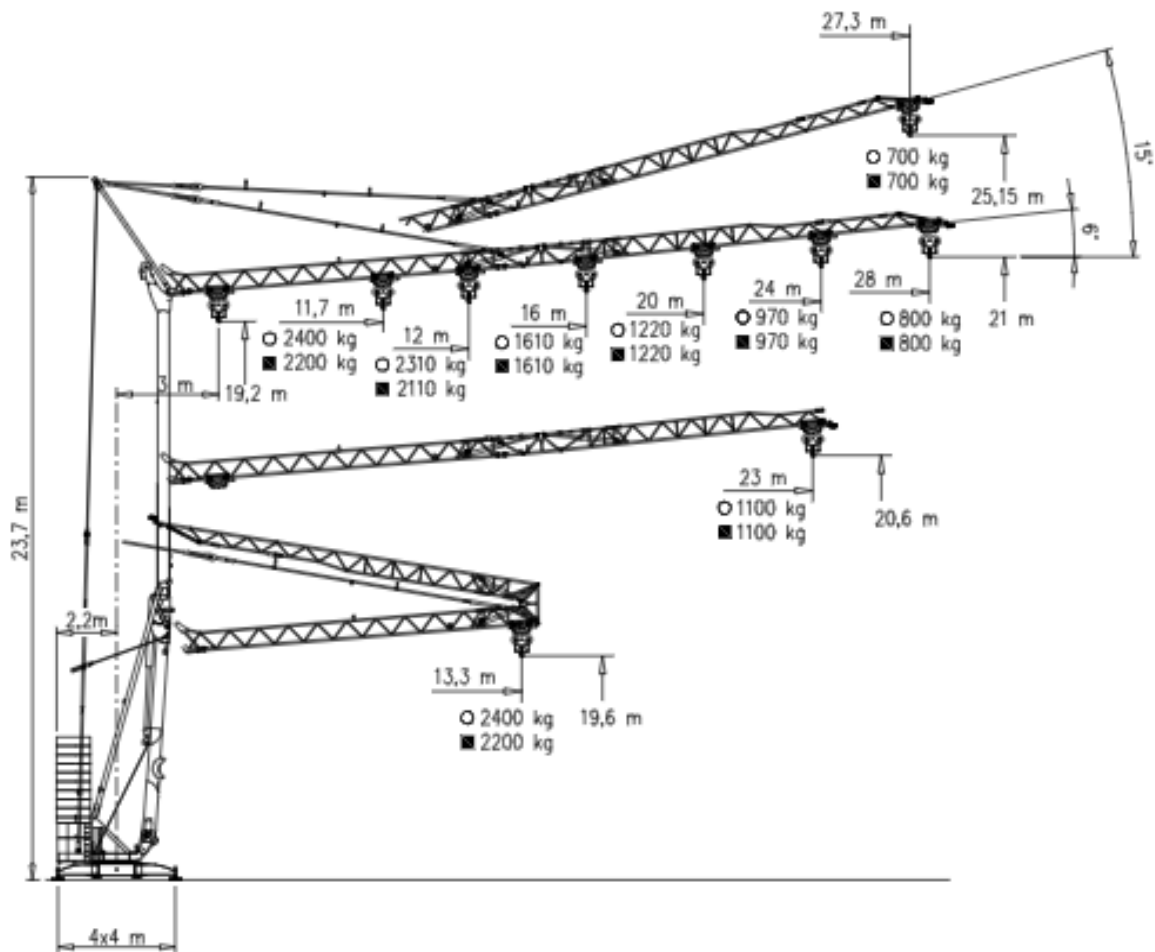


AFM Gru

828 RBI-V1



- TRIPHASE ☒ 400 V
- MONOTRIPHASE ☒ 230/400 V




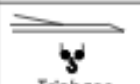
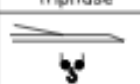



GRU A MONTAGGIO RAPIDO
GRUE A MONTAGE RAPIDE
GRUA DE RAPIDO MONTAJE
GRUA DE MONTAGEM RAPIDA
QUICK SELFRECTING CRANE
HYDRAULISCHER SCHNELLMONTAGEKRAN



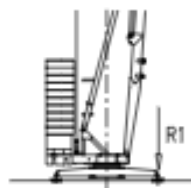
AFM Gru

828 RBI-V1

Curve di carico – Courbes de charges – Load diagrams – Lastkurven – Curvas de cargas

 Mono Triphase	☒ 230/400V	3 700	23 700	27,3 700	m kg	 Triphase	☒ 400V	3 700	23 700	27,3 700	m kg
 Mono Triphase	☒ 230/400V	3 2200	11,7 2200	12 2110	16 1610	20 1220	24 970	28 800	m kg		
 Triphase	☒ 400V	3 2400	11,7 2400	12 2310	16 1610	20 1220	24 970	28 800	m kg		
 Mono Triphase	☒ 230/400V	3 2200	12,7 2200	16 1810	20 1375	23 1100	m kg				
 Triphase	☒ 400V	3 2400	12,7 2400	16 1810	20 1375	23 1100	m kg				
 Mono Triphase	☒ 230/400V	3 2200	13,3 2200	m kg							
 Triphase	☒ 400V	3 2400	13,3 2400	m kg							

Reazioni – Reactions – Réactions – Eckdrücke – Reacciones – Reações



R1 ● 16 t ■ 12 t

▲ 9,4 t ◆ 18,1 t

{ N°2 A=3500Kg (1750Kgx2)
 N°2 B=2100Kg (1050Kgx2)
 N°10 C=12500Kg (1250Kgx10)

- | | | |
|-------------------------------|---------------------------------------|--------------------------------------|
| ● Reazioni in servizio | ● Reactions in service | ● Réactions en service |
| ■ Reazioni fuori servizio | ■ Reactions out of service | ■ Réactions hors service |
| ▲ Peso della gru senza assali | ▲ Dead weight without transport axles | ▲ Poids de construction sans essieux |
| ◆ Peso zavorra rotante | ◆ Ballast weight | ◆ Poids du lest |
-
- | | | |
|--|--|---|
| ● Reaktionskräfte in betrieb | ● Reacciones en servicio | ● Em serviço |
| ■ Reaktionskräfte außer betrieb | ■ Reacciones fuera de servicio | ■ Fora de serviço |
| ▲ Konstruktionsgewicht ohne transportachse | ▲ Peso de la grua sin tren de transporte | ▲ Peso de la grua sem carro de transporte |
| ◆ Ballastgewicht | ◆ Peso de lastre | ◆ Peso de lastre rotativo |